



 **BIOCLEAR**
PRODUCT CATALOG

TABLE OF CONTENTS

- About Bioclear.....1
- Black Triangle System..... 2-5
- 360 Veneer Matrix.....6
- HD vs Original Anterior Matrix Systems7
- HD Anterior Matrix System8-10
- Original Anterior Matrix System11-13
- Evolve Matrix System14-17
- Biofit Matrix System18-21
- Diamond Wedges.....22-23
- TwinRings24
- Komet Bur Blocks.....25
- HeatSync.....26-27
- Blaster and Accessories.....28-29
- Rockstar Polish System30-31
- Instruments.....32-33
- TruContacts.....34
- Marketing Materials.....35
- Bioclear Learning Center36-37

EXPANDING THE POSSIBILITIES OF RESTORATIVE DENTISTRY

Bioclear Matrix Systems represents a major advance over traditional G.V. Black dentistry. Applying principles of structural engineering and advanced materials science, Bioclear helps dental professionals achieve healthy, functional, and esthetically beautiful smiles for their patients. With the Bioclear Method and products, patients enjoy a minimally invasive approach, resulting in long-lasting and esthetically pleasing composite restorations. And dentists, through the Bioclear Learning Center, receive personalized hands-on training at education centers throughout the world and online.

BLACK TRIANGLE SYSTEM



The Black Triangle System enables black triangle closure faster than with the original Bioclear matrices.

BT MATRIX

Includes blue, green, yellow, & pink



Black Triangle matrices are custom designed for black triangle treatment and require no trimming prior to seating.

BT GAUGE

SKU #500111



The BT Gauge is for use with the color-coded BT Matrices. Use of the gauge with these color-coded matrices is designed to make black triangle closures simpler and more efficient.

DISCLOSING SOLUTION

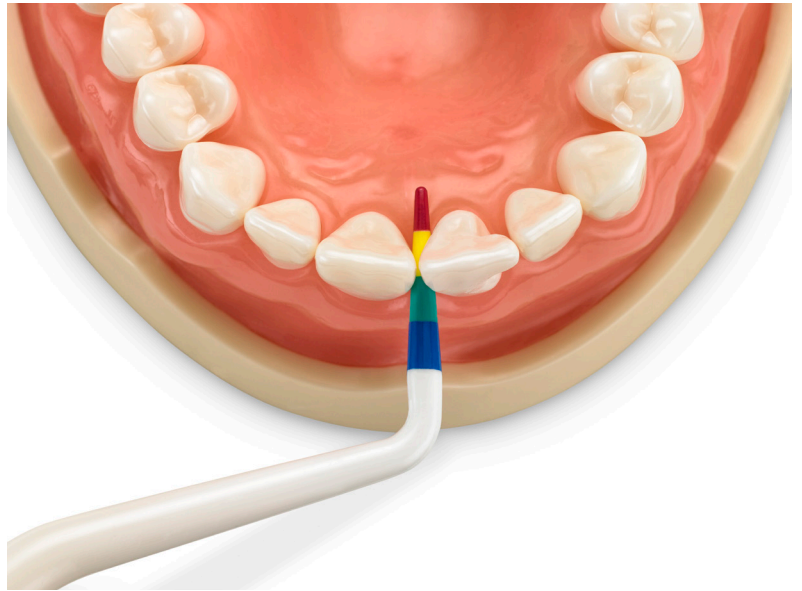
SKU #715091



Disclosing solution is designed for discovery of cracks and biofilm for blasting. Newer Biofilm stains pink. Older biofilm & cracks (more than 24 hours) stain purple, aiding the clinician in properly educating patients about oral hygiene & restorative needs.

BLACK TRIANGLE SYSTEM

A color-coded gauge and matrices make choosing the correct curvature for gingival embrasure closure simple and predictable. Curvature is indicated by colors at the top of the matrix and correspond with a gauge that, when inserted into the black triangle, indicates which curvature to use.



The matrices come in two sizes (large incisor and small incisor) and four curvatures allowing you to treat the entire anterior sextant, canine to canine, and both upper and lower arches with strong aesthetically pleasing results.

SMALL BT

For mandibular incisors and small maxillary lateral incisors.



LARGE BT

Are taller and wrap the tooth more than the Small Incisor BT Matrices. They should be used for maxillary central incisors, large maxillary lateral incisors, maxillary and mandibular canines, and maxillary and mandibular bicuspids.



BLACK TRIANGLE

BLACK TRIANGLE KIT SKU #801003



Includes: 10ct Small Blue – 10ct Small Green – 10ct Small Yellow – 10ct Small Pink – Black Triangle Gauge – TruContact Sample Pack
10ct Large Blue – 10ct Large Green – 10ct Large Yellow – 10ct Large Pink – 3ml Dual-Color Disclosing Solution

BT PROCEDURE KIT SKU #801010



Includes: 3ct Large Blue – 3ct Large Green – 3ct Large Yellow – 3ct Large Pink – 3ct Small Blue – 3ct Small Green
3ct Small Yellow – 3ct Small Pink – Black Triangle Gauge

BLACK TRIANGLE REFILLS



BLUE

Can close up to 2.5 mm of space

SIZE SKU

Small #301061

Large #301062



GREEN

Can close up to 2 mm of space

SIZE SKU

Small #301071

Large #301072



YELLOW

Can close up to 1.5 mm of space

SIZE SKU

Small #301081

Large #301082



PINK

Can close up to 1 mm of space

SIZE SKU

Small #301091

Large #301092

360° VENEER MATRIX

SKU #827051



The Bioclear 360° Veneer are specially designed to create a two part form around the tooth by using both mesial and distal abutting matrices. This form creates a mold around the tooth, sealing the gingival margins and enabling heated composite resin to completely envelop the tooth with an impressively durable, solid, pearlescent shell of composite. That monolithic, solid shell with the Mylar finish eliminates the inherent weaknesses of hand layered, free form, or indirect, putty matrix techniques of the past.

HD VS ORIGINAL ANTERIOR MATRIX SYSTEMS

Bioclear Anterior Matrices allow for a modern approach to composite dentistry. Advantages of Bioclear Anterior Matrices include:

- Predictable restoration or change of a tooth's emergence profile;
- A shape which allows for injection/placement of composite into the embrasure without fear of leaving an overhanging margin;
- A mylar finish which leaves the interproximal composite smooth and properly contoured;
- A shape that creates firm stabilization and a full marginal seal when seated into the sulcus which make them easy to use wedge free when closing small spaces with a full contact.

HD VS. ORIGINAL

stiffness vs. flexibility

75 μ vs. 50 μ

The difference between these systems comes down to flexibility vs stiffness. The Original is 50 μ thick, and the HD is 75 μ thick. Both Original and HD are offered in the standard A-series and the DC-series

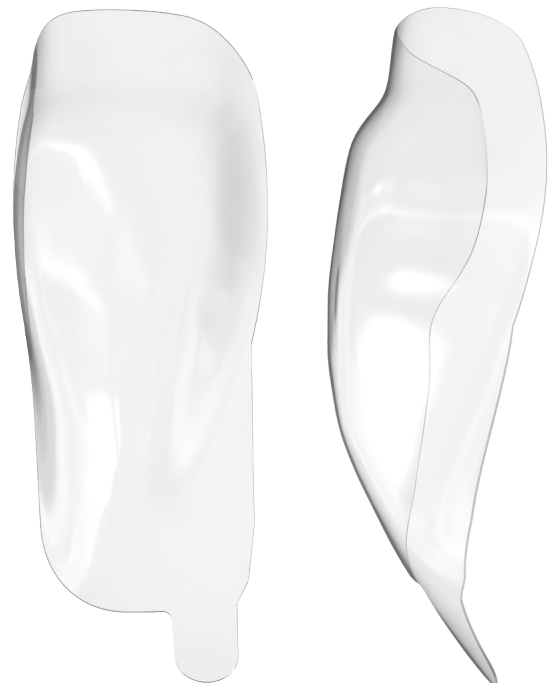
ANTERIOR (A-SERIES)

Has less emergence profile for restoring smaller spaces.



DIASTEMA CLOSURE (DC-SERIES)

Has more emergence profile for closing larger spaces.



HD ANTERIOR

COMPLETE HD ANTERIOR KIT SKU #820197



Includes: 15ct HD A101 Upper Mesial – 15ct HD A102 Upper Distal – 15ct HD A103 Small Incisor Universal – 15ct HD A104 Canine Mesial
15ct HD A105 Canine Distal – 15ct HD DC201 Diastema Closure Upper Mesial – 15ct HD DC202 Diastema Closure Upper Distal
15ct HD DC203 Diastema Closure Small Incisor – 8ct Diamond Wedge Small – 8ct Diamond Wedge Medium

STARTER HD ANTERIOR KIT SKU #820196



Includes: 15ct HD A101 Upper Mesial – 15ct HD A102 Upper Distal – 15ct HD A103 Small Incisor Universal – 15ct HD DC201 Diastema
Closure Upper Mesial – 15ct HD DC202 Diastema Closure Upper Distal – 15ct HD DC203 Diastema Closure Small Incisor

HD ANTERIOR MATRIX

A-SERIES SHAPES 75 μ



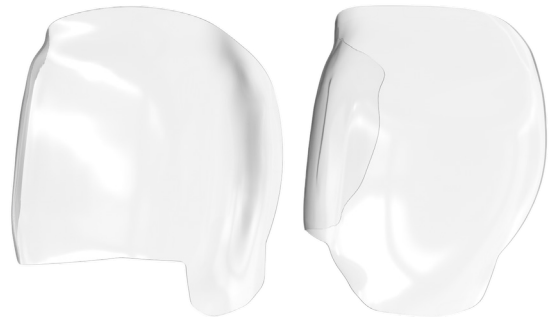
HD A101 - Upper Mesial
SKU #320011



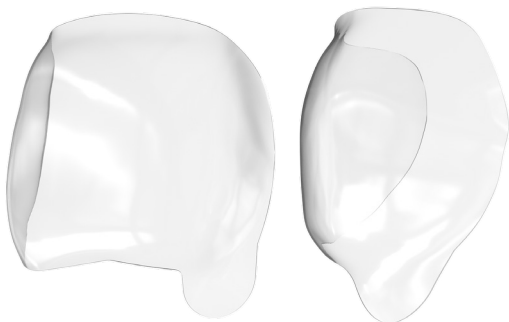
HD A102 - Upper Distal
SKU #320021



HD A103 - Small Incisor
SKU #320031



HD A104 - Canine Mesial
SKU #320041



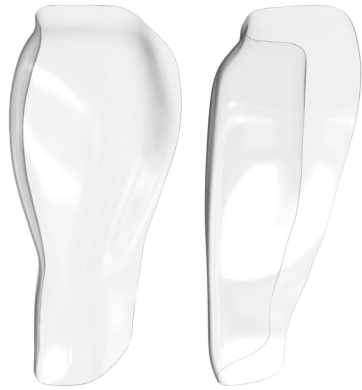
HD A105 - Canine Distal
SKU #320051

HD REFILL

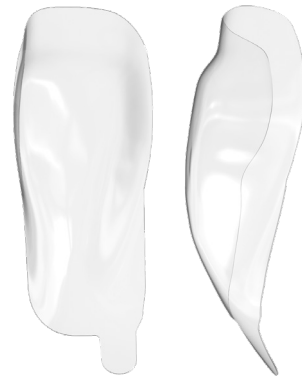


HD DIASTEMA CLOSURE MATRIX

DC-SERIES SHAPES 75μ



HD DC201 - Upper Mesial
SKU #319011



HD DC202 - Upper Distal
SKU #319021



HD DC203 - Small Incisor
SKU #319031



HD DC204 - Canine Mesial
SKU #319041

HD REFILL



ORIGINAL ANTERIOR

COMPLETE ANTERIOR KIT SKU #801027



Includes: 15ct A101 Upper Mesial – 15ct A102 Upper Distal – 15ct A103 Small Incisor Universal – 15ct A104 Canine Mesial – 15ct A105 Canine Distal – 15ct DC201 Diastema Closure Upper Mesial – 15ct DC202 Diastema Closure Upper Distal – 15ct DC203 Diastema Closure Small Incisor – 15ct DC204 Extra Large Mesial Diastema Closure – 8ct Diamond Wedge Small – 8ct Diamond Wedge Medium – 8ct Diamond Wedge Large – 8ct Diamond Wedge Extra Large – 1ct TruContact Red – 1ct TruContact Orange – 1ct TruContact Blue

STARTER ANTERIOR KIT SKU #801026



Includes: 15ct A101 Upper Mesial – 15ct A102 Upper Distal – 15ct A103 Small Incisor Universal – 15ct DC201 Diastema Closure Upper Mesial – 15ct DC202 Diastema Closure Upper Distal – 15ct DC203 Diastema Closure Small Incisor – 8ct Diamond Wedge Small – 8ct Diamond Wedge Medium – 8ct Diamond Wedge Large – 8ct Diamond Wedge Extra Large – 1ct TruContact Red – 1ct TruContact Orange – 1ct TruContact Blue

ORIGINAL ANTERIOR MATRIX

A-SERIES SHAPES 50 μ



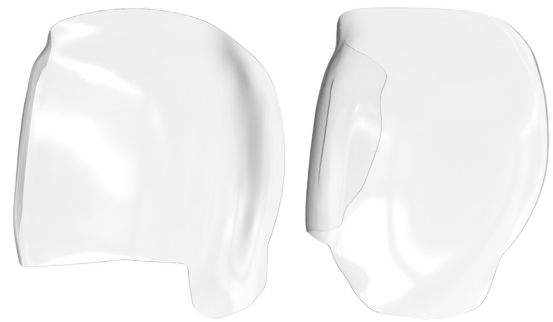
A101 - Upper Mesial
SKU #301011



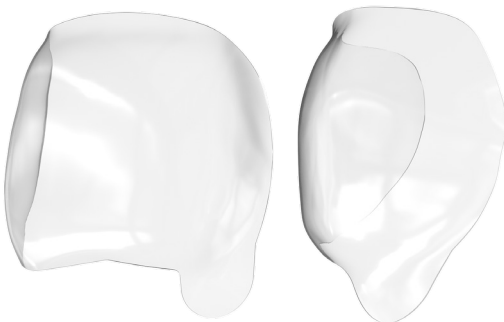
A102 - Upper Distal
SKU #301021



A103 - Small Incisor
SKU #301031



A104 - Canine Mesial
SKU #301041



A105 - Canine Distal
SKU #301051

ORIGINAL REFILL



DIASTEMA CLOSURE MATRIX

DC-SERIES SHAPES 50μ



DC201 - Upper Mesial
SKU #302011



DC202 - Upper Distal
SKU #302021



DC203 - Small Incisor
SKU #302031



DC204 - Canine Mesial
SKU #302041

ORIGINAL DIASTEMA CLOSURE REFILL



EVOLVE MATRIX SYSTEM



Following the legacy of the Biofit HD Matrix Series, the Evolve Matrices have the same benefits and additional features for posterior cases.

The new features of the Bioclear Evolve Matrix Series include:

- Four emergence profile shapes that are color-coded on the tab
- Matrix heights printed on the matrix for quick identification
- Extra-flared quick-release tabs on the buccal and lingual surfaces that are easier to find and use
- A wide array of sizes (heights) available (the black premolar comes in 5, 6, 7, 8, and 10mm's, the blue molar comes in 5, 6, 7, 8, and 9mm's, the orange molar comes in 6, 7, and 9mm's, and the pink molar comes in 6, 7, and 9mm's)

BLACK PREMOLAR

Shaped specifically for premolar teeth, these matrices can be used anywhere you would typically use a Biofit matrix or BT matrices on premolars.



BLUE MOLAR

Can be used for anything you would typically use a Biofit matrix for and more.



ORANGE MOLAR

Created for instances where the Blue Evolve matrices invert. This matrix features a flatter emergence profile curvature than the Blue Evolve but is not as flat as the Pink Evolve matrix.



PINK MOLAR

Created for whenever the Blue Evolve or Biofit matrices invert. Commonly this occurs between maxillary 1st and 2nd molars in cases of broad teeth, tight root proximity, or very flat teeth.



EVOLVE MATRIX SYSTEM

EVOLVE MATRIX

Includes black, blue, orange, & pink



The Bioclear Evolve Matrices have four different emergence profiles to fit a wider variety of cases and tooth shapes with less interproximal and subgingival finishing required than most other brands of matrices. The printed height on the matrix matches with the Evolve Matrix Height Indicator and makes choosing the correct matrix easy and quick.

TWINRING

SKU #208042



The TwinRing is designed for use in sectional Class II matrix adaptation and can be used with any matrix. The unique design allows the TwinRing to adapt to a variety of tooth types and shapes; apply a strong, even tension; and have great form memory, even after hundreds of uses.

DIAMOND WEDGES

Includes small, medium, large, xl, and deep caries or furcal in regular and long



The Bioclear Diamond Wedge is designed to solve many of the difficulties in using traditional, rigid wedges. The flexibility of the Diamond Wedge creates an excellent marginal adaptation and allows for easier placement. The Diamond Wedge is offered in both Original and Long.

PUSH-PULL

SKU #500131



The Push-Pull is a self expanding, matrix adjusting instrument and is designed to expand and oppose Bioclear posterior matrices to ensure tight broad contacts.

TWINRING FORCEPS

SKU #500081



The Bioclear TwinRing Forceps are specially engineered for use with the Bioclear TwinRings.

EVOLVE MATRIX HEIGHT INDICATOR (EMHI) SKU #500122



The Evolve Matrix Height Indicator (EMHI) is designed to guide matrix selection and curing. The indicator has two uses:
Matrix Height Indicator: Numbers are printed on the indicator so the correct Evolve matrix is chosen the first time.
Go/No-Go Indicator: The colored tip indicates if a cavity prep can be cured in one layer or if more must be used.

EVOLVE POSTERIOR KITS

COMPLETE EVOLVE POSTERIOR KIT SKU #827051



Includes: 25ct Evolve Blue 5mm – 25ct Evolve Blue 6mm – 25ct Evolve Blue 7mm – 25ct Evolve Blue 9mm – 25ct Evolve Orange 7mm – 25ct Evolve Orange 9mm – 8ct Diamond Wedge Medium – 8ct Diamond Wedge Large – 8ct Diamond Wedge Extra Large – 8ct Diamond Wedge Deep Caries – 1ct TwinRing Molar – 1ct TwinRing Premolar – 1ct TwinRing Forceps – 1ct Push-Pull Instrument – 1ct Evolve Matrix Height Indicator

ASSORTED EVOLVE MATRIX KIT SKU #827061



Includes: 10ct Evolve Blue 5mm – 10ct Evolve Blue 6mm – 10ct Evolve Blue 7mm – 10ct Evolve Blue 8mm – 10ct Evolve Blue 9mm – 10ct Evolve Orange 6mm – 10ct Evolve Orange 7mm – 10ct Evolve Orange 9mm – 10ct Evolve Pink 6mm – 10ct Evolve Pink 7mm – 10ct Evolve Pink 9mm

EVOLVE POSTERIOR MATRIX

REFILLS



BLACK PREMOLAR

These matrices are shaped specifically for premolar teeth.

SIZE	SKU
5mm	#327211
6mm	#327221
7mm	#327231
8mm	#327241
10mm	#327261



BLUE MOLAR

Can be used for anything you would typically use a Biofit matrix for and more.

SIZE	SKU
5mm	#327012
6mm	#327022
7mm	#327032
8mm	#327042
9mm	#327052



ORANGE MOLAR

Created for instances where the Blue Evolve matrices invert. This matrix features a flatter emergence profile curvature than the Blue Evolve but is not as flat as the Pink Evolve matrix.

SIZE	SKU
6mm	#327131
7mm	#327141
9mm	#327151



PINK MOLAR

Created for whenever the Blue Evolve or Biofit matrices invert. Commonly this occurs between maxillary 1st and 2nd molars in cases of broad teeth, tight root proximity, or very flat teeth.

SIZE	SKU
6mm	#327071
7mm	#327081
9mm	#327101

BIOFIT MATRIX SYSTEM

Formed with translucent mylar or stainless steel, the stiffer material and placement tab of the Biofit matrices provides a rigid structure that makes the matrix easy to place while the translucence of the mylar allows ample light to pass through for thorough light curing. Mylar matrices also leave the composite more polished and contoured than traditional metal matrices which leave a more matte finish. In addition, the shape of the Biofit matrices offers 30% more buccal/lingual and occlusal wrap than traditional matrices.



BIOFIT BLUE

translucent blue
50 μ mylar

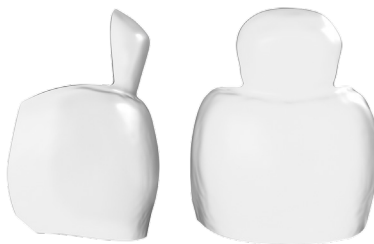


The BLUE series Bioclear Biofit matrices are formed from 50 μ mylar material that ensures flexibility, great form retention, and easy interproximal finishing.

The Biofit BLUE matrices come in three sizes; Molar 4.5 mm, 5.5 mm, and 6.5 mm.

BIOFIT HD

translucent white
75 μ mylar



The HD series Bioclear Biofit matrices are formed from heavier duty 75 μ mylar material that ensures easier placement, great form retention, and easy interproximal finishing.

The Biofit HD matrices come in four sizes; Molar 4.5 mm, 5.5 mm, 6.5 mm, and Pre-Molar 5.5 mm.

BIOFIT SS

opaque metal
50 μ stainless steel



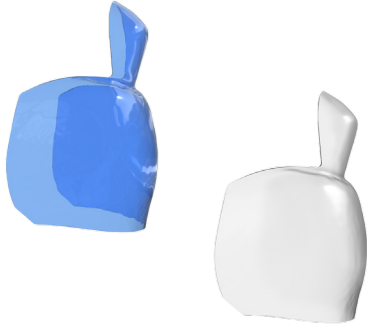
The SS series Bioclear Biofit matrices are formed from 50 μ stainless steel material and three placement tabs that ensures a strong matrix body which is great for easier insertion.

The Biofit SS matrices come in three sizes; Molar 4.5 mm, 5.5 mm, and 6.5 mm.

BIOFIT MATRIX SYSTEM

BIOFIT MATRIX

Includes blue, clear, & stainless steel



The Biofit matrices are made from three different materials, each of which has great features that are ideal for different types of cases.

TWINRING

SKU #208042



The TwinRing is designed for use in sectional Class II matrix adaptation and can be used with any matrix. The unique design allows the TwinRing to adapt to a variety of tooth types and shapes; apply a strong, even tension; and have great form memory, even after hundreds of uses.

DIAMOND WEDGES

Includes small, medium, large, xl, and deep caries or furcal in regular and long.



The Bioclear Diamond Wedge is designed to solve many of the difficulties in using traditional, rigid wedges. The flexibility of the Diamond Wedge creates an excellent marginal adaptation and allows for easier placement. The Diamond Wedge is offered in both Original and Long.

PUSH-PULL

SKU #500131



The Push-Pull is a self expanding, matrix adjusting instrument and is designed to expand and oppose Bioclear posterior matrices to ensure tight broad contacts.

TWINRING FORCEPS

SKU #500081



The Bioclear TwinRing Forceps are specially engineered for use with the Bioclear TwinRings.

BIOFIT POSTERIOR KITS

COMBINED BIOFIT POSTERIOR KIT SKU #818051



Includes: 25ct Biofit Blue 4.5mm – 25ct Biofit Blue 5.5mm – 25ct Biofit Blue 6.5mm – 25ct Biofit HD 4.5mm – 25ct Biofit HD 5.5mm – 25ct Biofit HD 6.5mm – 16ct Diamond Wedge Small – 16ct Diamond Wedge Medium – 16ct Diamond Wedge Large – 16ct Diamond Wedge Extra Large – 16ct Diamond Wedge Deep Caries – 1ct TwinRing Molar – 1ct TwinRing Premolar – 1ct TwinRing Forceps – 1ct Push-Pull Instrument

COMPLETE BIOFIT HD POSTERIOR KIT

SKU #818081



Includes: 25ct Biofit HD 4.5mm – 25ct Biofit HD 5.5mm – 25ct Biofit HD 6.5mm – 16ct Diamond Wedge Small – 16ct Diamond Wedge Medium – 16ct Diamond Wedge Large – 16ct Diamond Wedge Extra Large – 16ct Diamond Wedge Deep Caries – 1ct TwinRing Molar – 1ct TwinRing Premolar – 1ct TwinRing Forceps – 1ct Push-Pull Instrument

BIOFIT POSTERIOR REFILLS

REFILLS



BIOFIT BLUE

translucent blue
50 μ mylar

SIZE SKU

4.5mm #305011

5.5mm #305021

6.5mm #305031



BIOFIT HD

translucent white
75 μ mylar

SIZE SKU

4.5mm #318011

5.5mm #318021

6.5mm #318031



BIOFIT SS

opaque metal
50 μ stainless steel

SIZE SKU

4.5mm #306011

5.5mm #306021

6.5mm #306031

DIAMOND WEDGES

The Bioclear Diamond Wedge is designed to solve many of the difficulties in using traditional, rigid wedges.

The Diamond Wedge requires less effort to place than traditional wedges due to the diamond shaped cut-out in the tip, which collapses during insertion. The wedge then springs open once through the embrasure, creating a tight seal and preventing the wedge from backing out.



While still maintaining strong tooth separation, the flexibility of the Diamond Wedge creates an excellent marginal adaptation which eliminates the uncontrolled flow of excess composite and minimizes clean up after the composite has been cured.



The Diamond Wedge is offered in both Original and Long. The Original Diamond Wedge is intended for most cases. The Long Diamond Wedge is approximately 2mm longer than the Original wedge and is intended to be used when working on wider molars. Typically long wedges are used in conjunction with the Pink or Orange Evolve matrices.

DIAMOND WEDGE KIT SKU #812001



Includes: 16ct Diamond Wedge Small – 16ct Diamond Wedge Medium – 16ct Diamond Wedge Large – 16ct Diamond Wedge Extra Large – 16ct Diamond Wedge Deep Caries

DIAMOND WEDGE REFILLS



SMALL PINK
SIZE SKU
Regular #112011
Long #112061



MEDIUM ORANGE
SIZE SKU
Regular #112021
Long #112071



LARGE YELLOW
SIZE SKU
Regular #112031
Long #112081



EXTRA LARGE BLUE
SIZE SKU
Regular #112041
Long #112091



DEEP CARIES GREEN
SIZE SKU
Regular #112051
Long #112101

TWINRINGS



TWINRING REFILLS

SIZE SKU

Premolar #208021

Molar #208011

Molar/Premolar #208031

Universal #208042

The TwinRing is designed for use in sectional Class II matrix adaptation and can be used with any matrix. The unique design allows the TwinRing to adapt to a variety of tooth types and shapes. The geometry of the ring causes it to apply a strong, even tension that:

- assists in the separation of the teeth
- creates a strong seal with the matrix without collapsing the matrix into the cavity
- and doesn't allow the composite to flow past the gingival margin which eliminates line angle overhangs

The structural design of the TwinRing causes it to have excellent form memory; it is guaranteed to retain its original shape without warping, even after hundreds of uses.

TWINRING PREMOLAR



Designed for separating premolar teeth with adequate separation strength.

TWINRING MOLAR



Designed for separating molar teeth with adequate separation strength.

TWINRING UNIVERSAL



Designed for separating any posterior teeth with exceptional separation strength and phenomenal grip, even on short teeth.

KOMET BUR BLOCK



Bioclear Bur & Bur Block Kit
SKU #823021

Bioclear partnered with Komet USA to create a kit that gives dentists instruments that are specifically designed for the Bioclear Method and the Bioclear Class II. The kit provides dental burs needed to complete the Bioclear Method efficiently and effectively with optimum results.

Bioclear and Komet USA partnered to create a kit that gives dentists instruments that are specifically designed with the Bioclear Method in mind. Kit includes one of each bur and a metal sterilizing container.



Calla Lily Bur Block + Refill Kit
SKU #623080

HEATSYNC

One of the five pillars of the Bioclear Method is the Injection Molding Technique using heated composite. The HeatSync is the only heater designed with the injection molding process in mind. The HeatSync composite warmer is a must for creating void free injection molded composites.

HEATSYNC

SKU #414011



HEATSYNC MINI

SKU #417011



155°F / 68°C

Due to the large anodized aluminum heat-transfer top, the HeatSync heats dental materials to the optimum working temperature of 155°F / 68°C quickly and self-regulates all day.

LARGE CAPACITY

The HeatSync has ample space for all the dental materials needed for restorative cases. The layout of the heater facilitates the heating of two compule guns, two syringes, and up to six extra compules in the top oven.

ERGONOMIC DESIGN

The ergonomic design of the HeatSync's heating slots ensures that the compule guns and syringes are easy to handle when placing into and removing from the unit.

EASY TO CLEAN

The HeatSync is easy to clean; the removable heat-transfer top is made of the highest quality autoclavable materials.

HEATSYNC



- Ergonomic Composite Gun Slots
- Compule Oven
- Ergonomic Syringe Slots
- Aluminum Heat-Transfer Top

HEATSYNC COMPOSITE GUN SKU #714011



The HeatSync Composite Gun is fully comprised of heat-safe materials which do not transfer heat and are therefore safe for use on patients immediately after removal from the HeatSync



- Compule Oven
- Top Warming Unit
- Silicone Hot Pad
- Heat-Safe Compule Gun (2 included)
- Base Warming Unit

FOR REPLACEMENT PARTS, CONTACT YOUR DISTRIBUTOR

BLASTER

SKU #415011



The Bioclear Blaster is the perfect combination of minimally invasive yet effective cleaning power, ergonomic design, easy installation, and adaptability. Using a powerful and effective Aluminum Trihydroxide blasting slurry, the Blaster efficiently removes the toughest biofilm without damaging the enamel surface. The Bioclear Blaster is easy to move between operatories and plugs directly into your dental control unit using any KaVo Multiflex type swivel connection. In addition, the swivel provides a full 360° rotation to reduce tubing drag and wrist strain!



After application of Bioclear Dual Color Disclosing Solution



Bioclear Blaster during removal of biofilm stained by Bioclear Dual Color Disclosing Solution

Clinical images provided by Dr. David Clark

BLASTER ACCESSORIES

BIOCLEAR DUAL COLOR DISCLOSING SOLUTION

SKU #715091

Disclosing solution for discovery of cracks and biofilm for blasting. Newer Biofilm stains pink. Older biofilm & cracks (more than 24 hours) stain purple, aiding the clinician in properly educating patients about oral hygiene & restorative needs.

Each bottle contains 59 ml of disclosing solution.



BIOCLEAR BLASTING POWDER

SKU #715031

Aluminum-Trihydroxide powder for use with the Bioclear Blaster. This powder is soft enough that it does not remove tooth structure, but hard enough that it fully removes biofilm. Each bottle contains 6 oz of blasting powder.



BLASTER TIP REPLACEMENT

SKU #715011

Replacement tip for the Bioclear Blaster.



SWIVEL ATTACHMENT

SKU #715021

Replacement swivel attachment for the Bioclear Blaster. This attachment is a 4 hole non-optic swivel attachment which can be connected to any KaVo



FOR REPLACEMENT PARTS, CONTACT YOUR DISTRIBUTOR

ROCKSTAR POLISH SYSTEM

ROCKSTAR POLISH KIT

SKU #823011



Bioclear's two-step Rockstar Polish is designed to give your composite restorations a phenomenal finish and shine and is one of the four cornerstones of the Bioclear Method.

Includes: 150g Magic Mix Paste – 100ct Magic Mix Prophy Cups – 10ct RS Polishers, Cups



Magic Mix Paste and Magic Mix Prophy Cup



RS Polisher Cup

Clinical images provided by Dr. David Clark

ROCKSTAR POLISH COMPONENTS

MAGIC MIX PASTE

SKU #700111



The first step of the Rockstar Polish, this dual abrasive pre-polish marginates to the infinity edge and creates the perfect matte finish before moving on to the second step of the Rockstar Polish – the RS Polisher.

MAGIC MIX PROPHY CUPS

SKU #623031



The Magic Mix prophy cups are part of the first part of the famous “Rockstar Polish.” The Magic Mix Prophy cups are disposable prophy cups to be used with the mint-flavored Magic Mix Pre-Polish.

RS POLISHER - CUP

SKU #623041



RS POLISHER - FLAME

SKU #623031



The all new RS Polisher is the final step to the famous “Rockstar Polish”. The RS polisher is to be used after the pre-polish with the Magic Mix. When used with water and heavy pressure the RS Polisher will create a mylar like surface. The updated formula creates a final polish faster than ever before without breaking down..

INSTRUMENTS

CLARK EXPLORER

SKU #500011



The Bioclear Clark Explorer's points are stiff and ideal for removing matrices.

SCULPTING POINT

SKU #500021



The special narrow tipped Bioclear Sculpting Point is used for adapting matrices & creating occlusal anatomy.

CURVED SCULPTING PADDLE

SKU #500031



The Bioclear Curved Sculpting Paddle is designed for adapting matrices and sculpting composite.

MICRO HEMOSTAT

SKU #500041



The Bioclear Micro Hemostat has a special narrow tip and is ideal for removing matrices.

SCALPEL HANDLE

SKU #500051



The ergonomic round Bioclear Scalpel Handle is great for cleaning up excess composite.

CURVED MICRO PLIERS

SKU #500061



The Bioclear Curved Micro Pliers are used for matrix placement and adaptation in both anterior and posterior restorations.

INSTRUMENTS

MATRIX SCULPTING SCISSORS

SKU #500071



The Bioclear Micro-Sculpting Scissors are sharp and small and great for trimming matrices.

TWINRING FORCEPS

SKU #500081



The Bioclear Twin Ring Forceps are specially engineered for use with the Bioclear Twin Rings.

PUSH-PULL

SKU #500131



The Push-Pull is a self-expanding, matrix adjusting instrument and is designed to expand and oppose Bioclear posterior matrices to ensure tight broad contacts.

BLACK TRIANGLE GAUGE

SKU #500111



The BT Gauge is for use with the new color-coded BT Matrices. The use of the gauge with these color-coded matrices is designed to make black triangle closures simpler and more efficient.

EVOLVE MATRIX HEIGHT INDICATOR (EMHI)

SKU #500122



The Evolve Matrix Height Indicator (EMHI) is designed to guide matrix selection and curing. The indicator has two uses:

Matrix Height Indicator: Numbers are printed on the indicator so the correct Evolve matrix is chosen the first time.

Go/No-Go Indicator: The colored tip indicates if a cavity prep can be cured in one layer or if more must be used.

TRUCONTACT



Contact optimization is an essential part of the Bioclear Method. Natural contacts are generally too tight and too rough to allow insertion of a mylar matrix.

Bioclear TruContact Saws and Sanders are designed to work in sequence to lighten the contact which then improves the ease of placement of the mylar matrices. As an additional advantage, the TruContact also removes biofilm from the contact.

TRUCONTACT BLUE

SKU #613031



Saw for breaking contacts.

TRUCONTACT ORANGE

SKU #613021



Single-sided Sander

TRUCONTACT RED

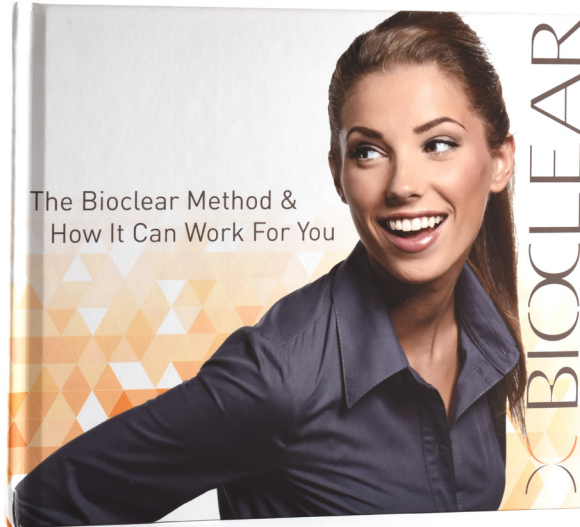
SKU #613011



Double-sided sander

MARKETING MATERIALS

PATIENT BOOK SKU #700071



Bioclear's marketing materials are useful tools to help dentists show the possibilities available using the Bioclear Method. Filled with before and after photos and information on smile aesthetics, the Bioclear Patient Book will help dentists visually show patients the beautiful new smile they can have.

PATIENT BROCHURE SKU #700061



The Patient Brochure is handy for the patient to take home and shows before and after photos for black triangle, diastema closure, and peg lateral treatments.



BIOCLEAR

LEARNING CENTER



OUR MISSION

The Bioclear Learning Center aims to improve restorative outcomes and raise patient expectations of modern composite dental care by providing dentists with continuing education and certification in the practice of the Bioclear Method.



The Bioclear Method is a system of restorative dental procedures and protocols that, when combined in practice with Bioclear tools and materials, results in predictable, esthetically pleasing, and long-lasting patient outcomes.

The first Learning Center was built in Tacoma, Washington. International locations are now up and running. Taking a Bioclear course will connect you with doctors and patients across the globe.



VIRTUAL COURSES

Virtual courses with hands-on demonstrations are available from the comfort and convenience of your own office. The Bioclear Learning Center courses feature small class sizes with hands-on, interactive curriculum for an immersive learning experience. Virtual courses last one day.

IN-PERSON COURSES

The Bioclear Learning Center courses feature small class sizes with hands-on, interactive curriculum for an immersive learning experience. These courses can last between three and four days, depending on the course. Prepare to work hard and play hard; in-person courses are equally challenging and rewarding.



BIOCLEAR
LEARNING CENTER

FOR MORE DETAILED INFORMATION, REQUEST THE BCLC COURSE CATALOG FROM YOUR REPRESENTATIVE OR FIND IT ONLINE AT WWW.BIOCLEARMATRIX.COM.

Please note that products shown in this catalog are not at actual size.

Not all products are available in all countries. outside the USA. To find a distributor near you, visit bioclearmatrix.com

 **BIOCLEAR**

3802 South Warner St
Tacoma, WA 98409 USA
(855) 712-5327
bioclearmatrix.com